



MATRYCS

MATRYCS Large scale pilots [LSPs]

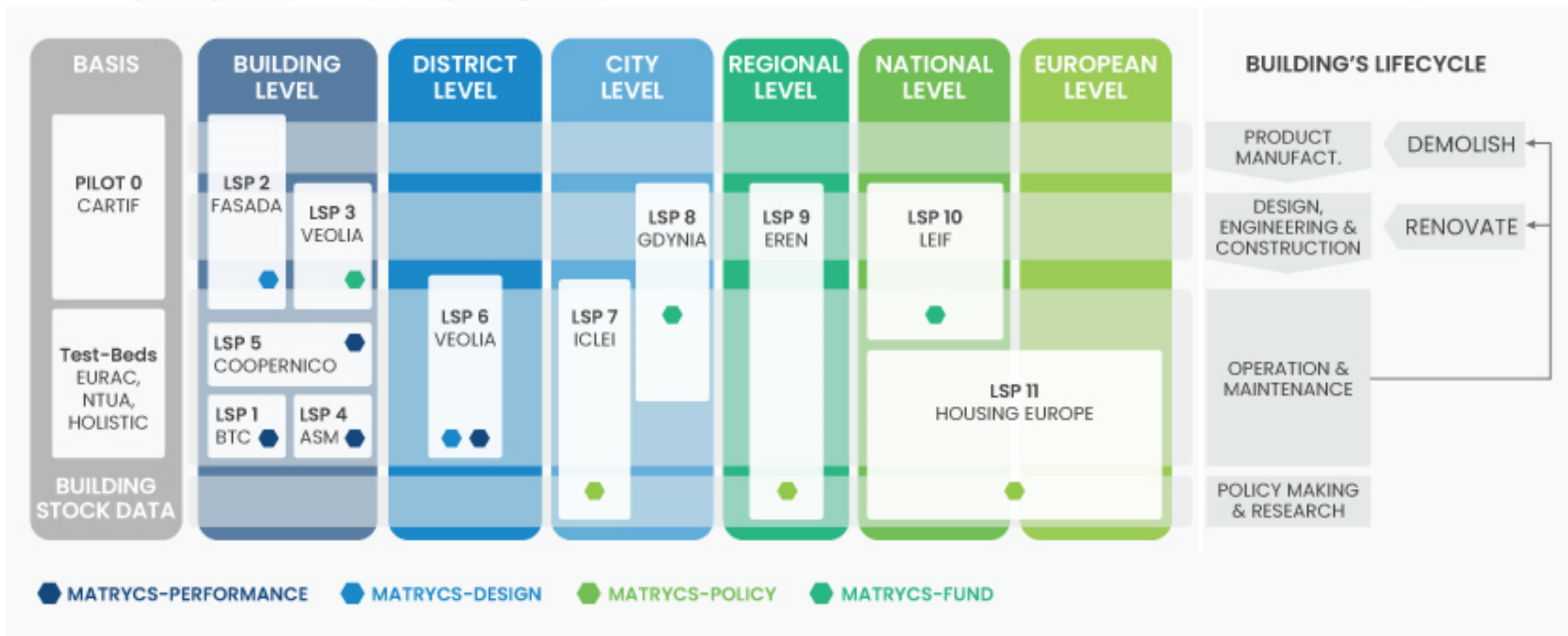
Modular Big Data Applications
for Holistic Energy Services in
Buildings

Gema Hernández-Moral

CARTIF Technology Centre (Spain)



MATRYCS pilot structure: scope and scales



- MATRYCS pilot's approach covers the **whole lifecycle of buildings:**
from the product manufacturing to the operation and maintenance, as well as policy making and research
- Buildings are considered from **different perspectives and scales:**
buildings as individual elements to their aggregation at varied scales

MATRYCS pilot structure: concepts covered



PERFORMANCE

Services and business models based on the **operational stage of buildings aims at monitoring and improving their energy performance**. Predictive capabilities related to comfort evaluation, energy demand, consumption or generation, will be complemented by optimization capabilities for the management of comfort-aware building energy consumption, management of District Heating networks or energy matching.



LSP1



LSP4



LSP5



LSP6



DESIGN

Services and business models aiming **at facilitating the design, refurbishment and development of building infrastructure**. In particular, focusing at building level design of retrofiting actions, as well as at district level design of networks.



LSP2



LSP6



POLICY

Services and business models to support **policy making and policy impact assessment**. They will be targeting three main elements revolving around policies at different scales: Sustainable Energy and Climate Action Plans, Energy Performance Certificates and impact assessment of EU policies for buildings.



LSP7



LSP9



LSP11



FUND

Services and business models aiming at addressing challenges for **enhanced reliability and reduced risks of energy efficiency investments**, tailored to ESCOs and financing institutions, hence contributing to better define Energy Performance Contract conditions. They will also tackle the centralization of building stock data, the analysis of refurbishment actions and the evaluation of their bankability through the testing of one-stop-shops at city level.



LSP3



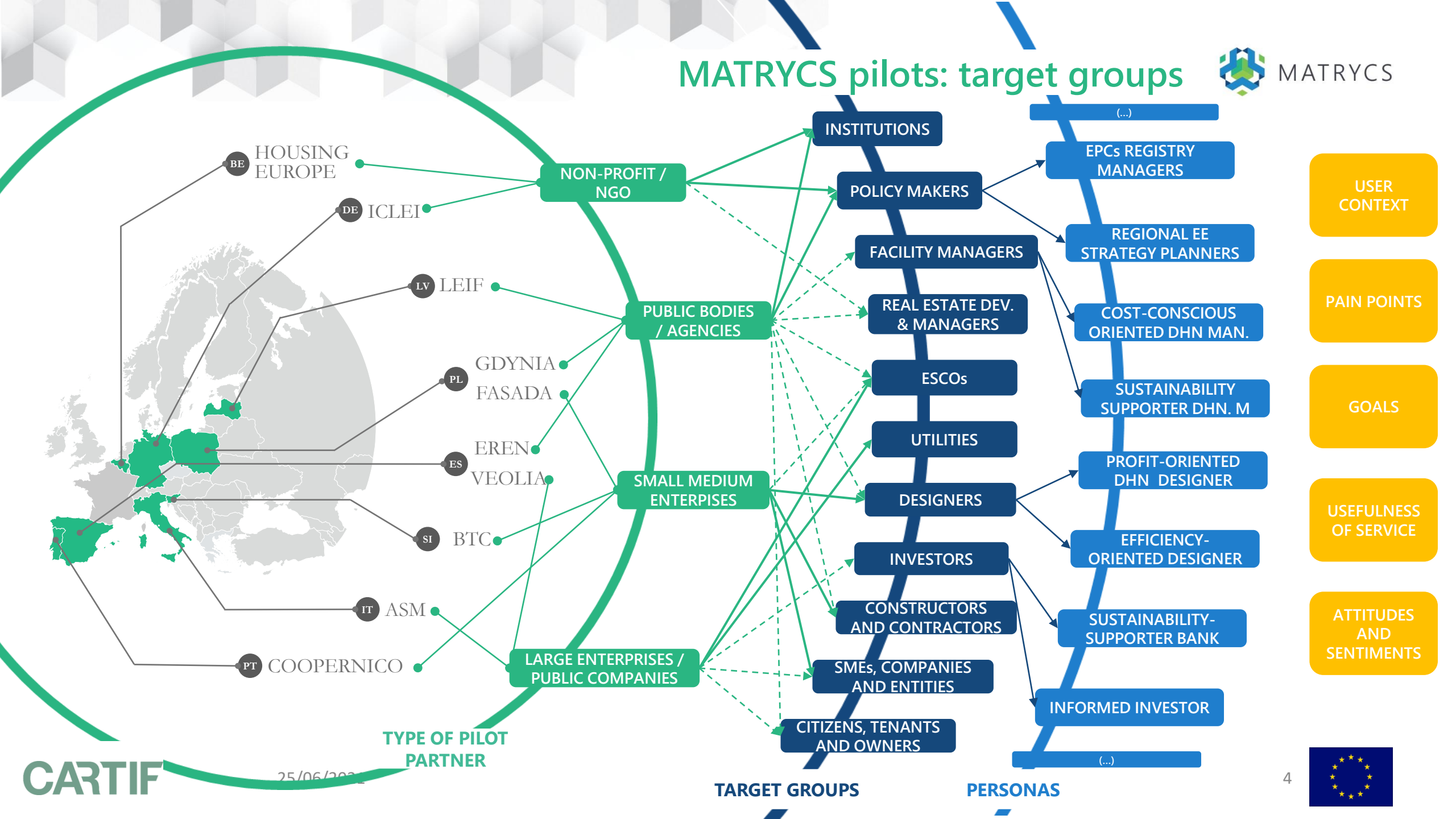
LSP8



LSP10



MATRYCS pilots: target groups



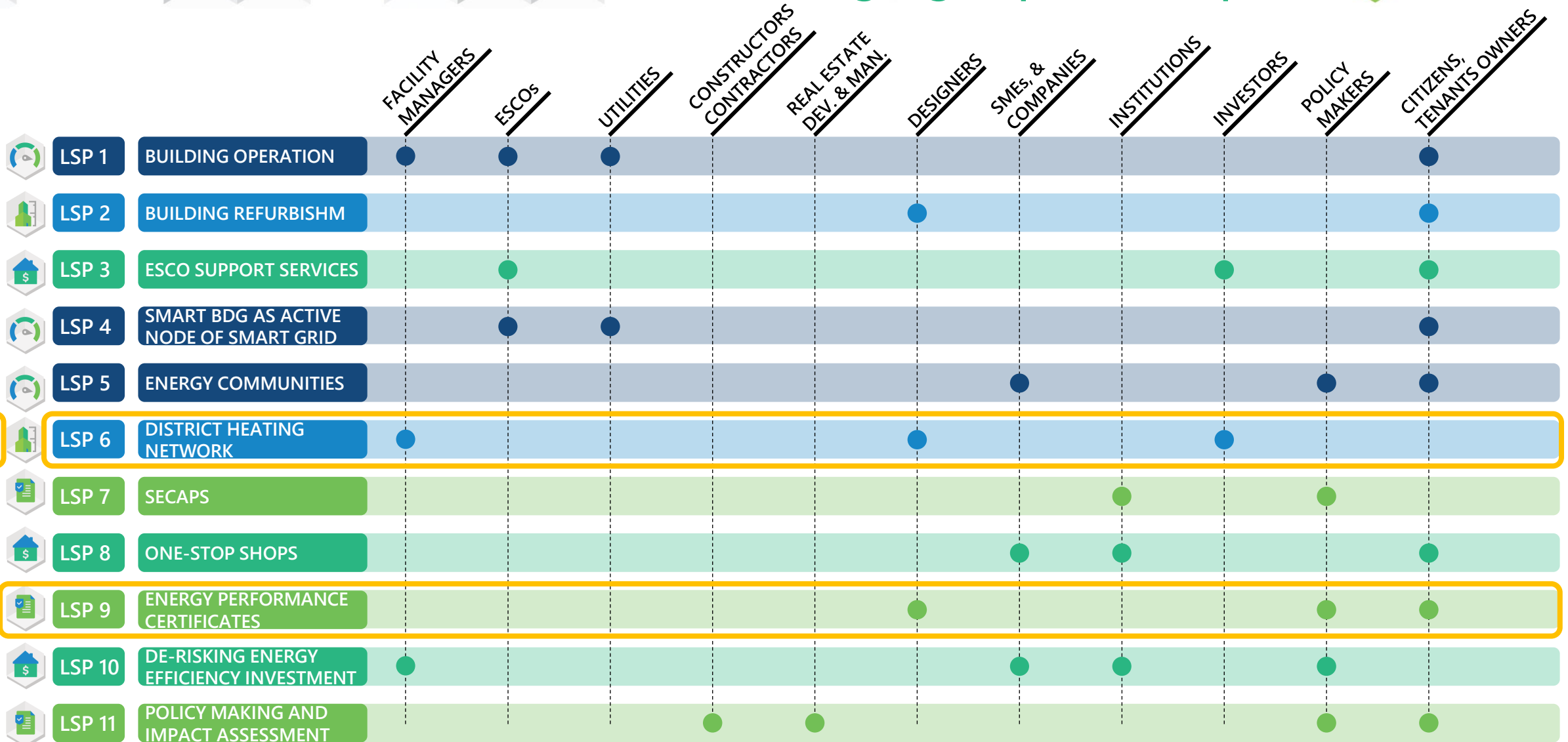
What target group do you identify most with?



**INSERT POLL >> SLIDO?? >> What target group do you identify with the most?
(use the list of available options in dark blue in the previous slide)**



MATRYCS target groups in each pilot





MATRYCS

Modular Big Data Applications for
Holistic Energy Services in Buildings

Thank you!

Gema Hernández Moral


LSP Pilot coordinator

CARTIF Technology Centre


Visit our Website

 www.matrycs.eu


Email us

 contact@matrycs.eu

Follow us

 [matrycs_h2020](https://twitter.com/matrycs_h2020)

 [MATRYCS](https://www.linkedin.com/company/matrycs)

 [matrycs2020](https://www.facebook.com/matrycs2020)

CARTIF

www.matrycs.eu

The MATRYCS project has received funding from the European Union's Horizon 2020 research and innovation programme under grant agreement no.101000158

